

# Ovni 30 Aluminum Sailing Yacht – Fully Equipped & Ready for Adventure



For sale is a well-maintained aluminum Alubat Ovni 30—a proven, blue-water capable cruiser with an integral lifting keel. It is the ideal vessel for demanding waters, and with its variable draft, a good anywhere boat.

Specifications & Key Data:

- Year: 1991
- LOA: 9.60 m | Beam: 3.27 m

- Draft: 0.50 m (keel & rudder up) to 1.95 m (keel and rudder down)
- Displacement: 3.1 t (empty)

### Refit & Condition:

The yacht underwent an extensive refit between 2017 and 2019 and has been continuously maintained and upgraded since. Many critical components, including the mast and engine, have been regularly serviced. The mast and engine were replaced by the previous owner. The interior was repainted (matte high-build epoxy), and new upholstery was installed.

- Layout: 2 berths in the V-berth + aft cabin and salon.

### Sails & Rigging:

- High-quality North Sails 3Di (2019).
- Rolly Tasker Gennaker (2021) with aluminum bowsprit, snuffer, and turtle bag.
- Fractional rig for easy gennaker handling.

- Well-dimensioned winches in ample quantity.

## Navigation & Electronics:

- B&G Electronics: Vulcan 7 plotter (C-Map Northern Europe), two multi-displays, fully networked via NMEA.
- Autopilot: Raymarine Evolution (Evo).
- Radar with dedicated screen and radar reflector.
- AIS: Active (switchable) and passive, with a dedicated antenna on the radar mast.
- VHF Radio (Ray 54e).
- Full LED lighting: Aqua Signal navigation lights and Danish cabin lights.
- Entertainment: Fusion Marine satellite radio with Bluetooth.
- Connectivity: WLAN booster (mast antenna) and USB charging ports throughout the boat and cockpit.
- Monitoring: UMTS alarms for bilge and

battery levels.

## Comfort & Systems:

- Plumbing: All through-hulls and seacocks by Trudesign.
- Steering: Windpilot Pacific Light (2021/22).
- Climate: Webasto air heating for cold days.
- Canvas: Sprayhood with new windows (Winter 2025/26); "Kuchenbude" (full cockpit enclosure) from 2022, partially renewed windows, also usable as a Bimini.
- Power: Solar panels, Victron BlueSmart charger (Bluetooth), battery monitor.
- Batteries: New service batteries 2026 (2x 90Ah Victron Gel Deep Cycle); new starter battery 2024.
- Galley: 2-burner gas stove with oven and refrigeration.

## Engine & Propulsion:

- Nanni Diesel: 14 HP, 2-cylinder (replaced,

not original)—reliable and proven.

- Folding propeller and self-adjusting shaft seal.

Recent Maintenance (Winter 2025/26):

- Lower rudder bearing replaced.
- Lines, bearings, and lead blocks for the lower rudder section serviced.
- Complete hull paint build-up: Primer plus 4 layers of Jotun Seajet 034 A Antifouling.
- New anodes.
- Note: The wind transducer has a bearing defect (wind direction works, speed is intermittent); it is easily replaceable.

Summary:

This is a robust, versatile, and superbly equipped aluminum yacht for ambitious sailors who value safety and independence. The boat comes with an extensive stock of spare parts (filters, coolant, belts, oil, impeller pump, etc.).

We are selling due to a spontaneous upgrade to a larger vessel but are in no rush. The boat can be viewed in the Papenburg area (Germany) by appointment. We have enjoyed 6 wonderful years as a family on Panacee and would buy her again in a heartbeat.

Asking price €69,000.00.



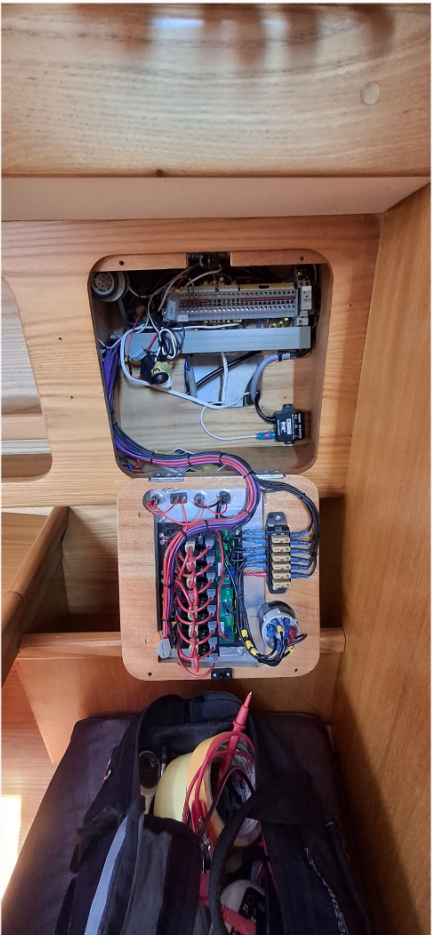




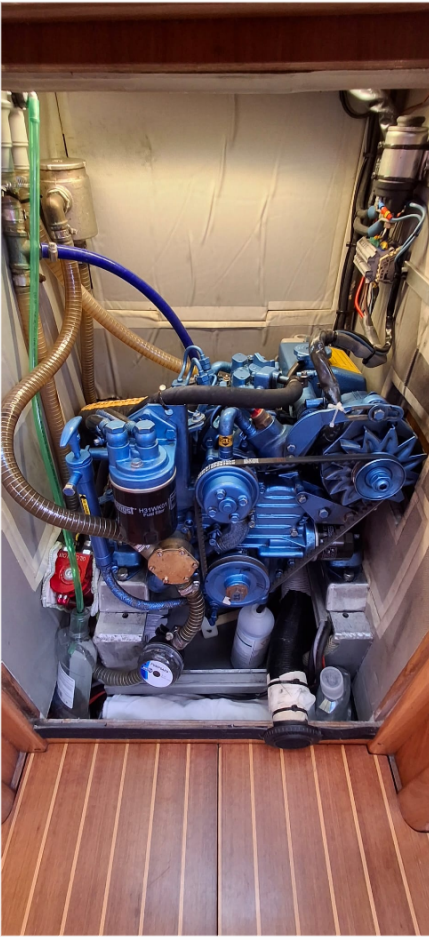














Check us out on Instagram for more photos/videos: @sailingsmilla  
We speak German and English. Please send a message if you are seriously interested, and we can discuss further details by phone at +49 152 5937 2883